

More details and pictures about the machinery and premises are as below.

LIST OF MACHINERY:

1. RCN Sizing machine:



Used to sort the raw cashew nuts according to the sizes.

Capacity: 12 tonnes RCN per shift.

2. RCN washing machine:



Used to wash the raw cashew nuts and remove foreign materials before boiling and cooking and to prevent damage to automatic shelling machine by foreign material while shelling. Capacity: 3 tonnes RCN per shift.



The raw cashew nuts are boiled by passing steam before shelling.

Capacity: 320 kg RCN per batch. Upto 3.5 tonnes of RCN can be boiled per shift.

4. Automatic Shelling machine:



Used to cut open the boiled raw cashew nuts to extract the cashew kernels.

Capacity: 2.5 tonnes RCN per shift



The extracted cashew kernels have a red skin around them. The cashew kernels from the shelling machine is filled in racks and placed inside this dryer to heat them to remove the red skin.

Capacity: 500kg cashew kernels.

6. Peeling machine:



After drying cashew kernels in borma dryer it is then cooled in a cooling room for 24hrs. Then fed inside this peeling machine to blow away the red skin (husk) using compressed air.

Capacity: 120 kg cashew kernels per hour.



Compressed air used for peeling machine and color sorter.

Capacity: 30 HP



The husk from the peeling machine will contain small pieces of cashews. The husk will be fed to this machine and the cashew pieces will be separated from the husk by vibration.

9. Manual shelling machine:



Used to manually cut open the RCN after boiling. Operated by labours.



Used for inspection of cashew kernels for grading. Labours can manually hand pick and sort the cashews here.

11. Bucket elevator:



The boiled raw cashew nuts are put into the grill on the bottom from where the bucket elevator carries the RCN to the automatic shelling machine's hopper. It stops and starts automatically as per the space on the hopper.



Open Shed:







Cooling Room:



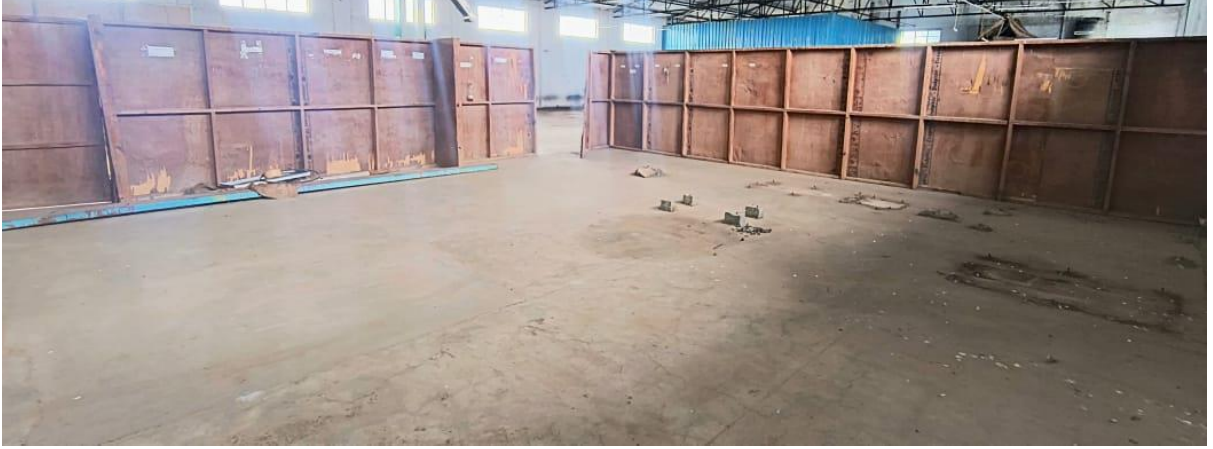


Water sump:



Packing room:





Garden labour leisure area:



Staff or labour resting room:







Mess:



Mess can be used for cooking for staff.



Backside open land: Can be utilised if required later.

